

PROJECT 1

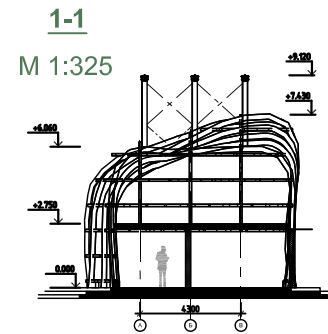
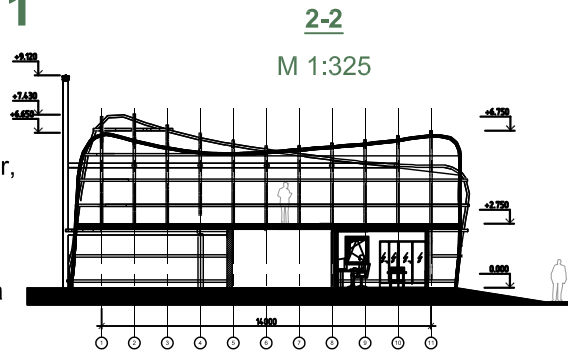
Leningrad region
Vsevolozhskiy municipal district

Space and arrangement design:

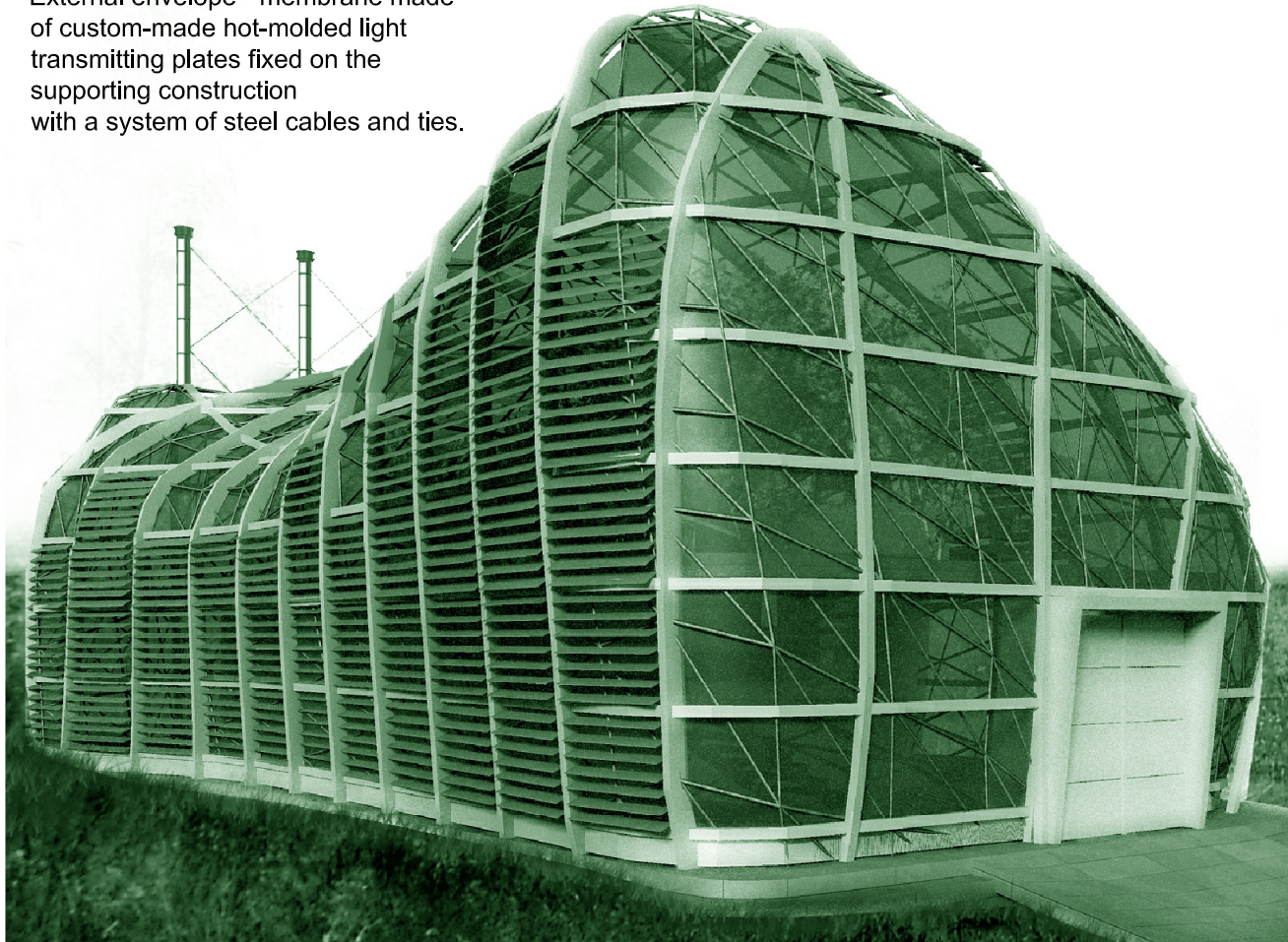
Biogas plant pavilion is 2-storeyed, predominately rectangular, non-linear, with different degree of curvature.

Supporting construction consists of a number of monolithic frames of different sections alternating in three directions.

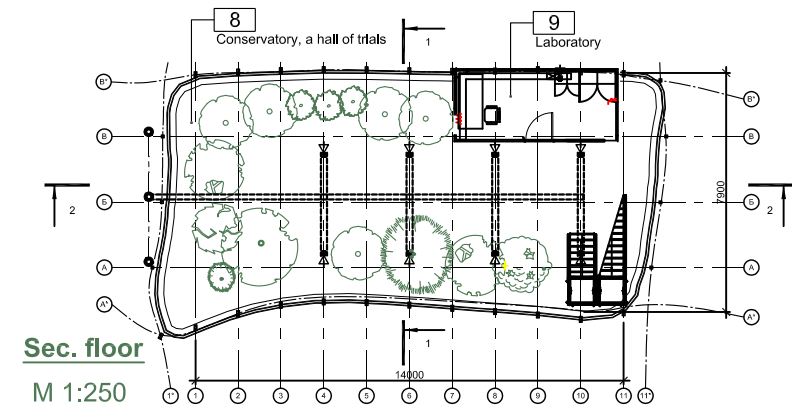
External envelope - membrane made of custom-made hot-molded light transmitting plates fixed on the supporting construction with a system of steel cables and ties.



Project of experimental pavilion of biogas plant, БИО-10 power generating unit with chicken manure processing capacity of 10 tons/day for electric power supply of private houses; 2006.

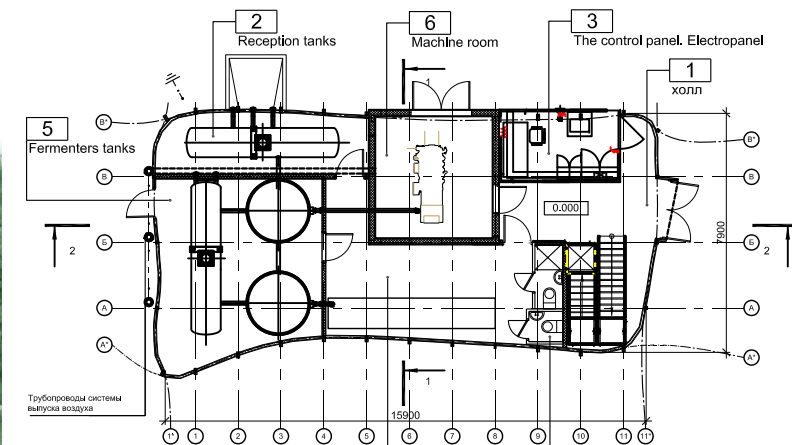


perspective project rendering



Sec. floor

M 1:250



Ground floor

M 1:250